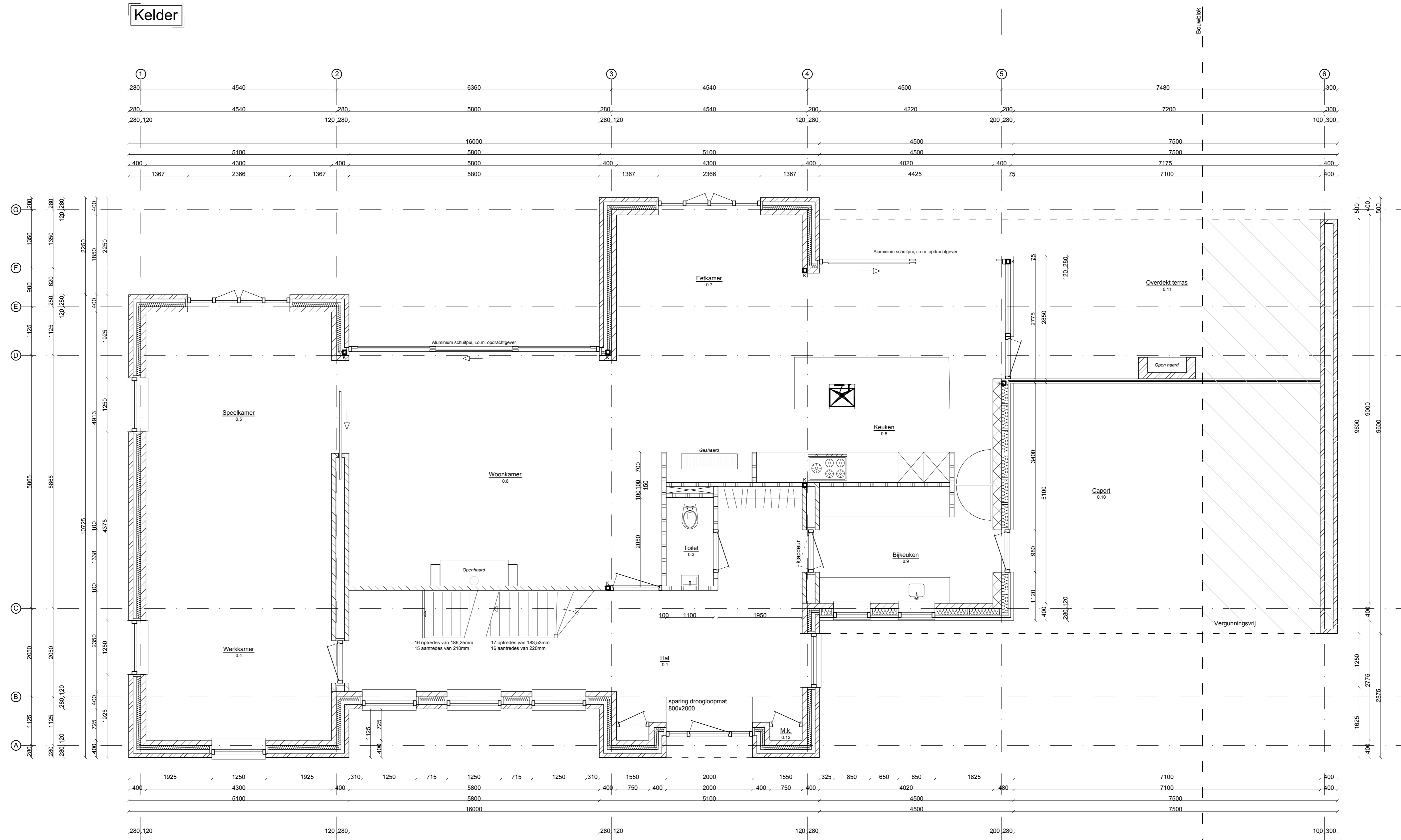


- | | | |
|--|-------------------------|----------------------------|
| | buitenmetselwerk | Ø=100mm |
| | dragend metselwerk | Ø=200mm |
| | dragend metselwerk | Ø=150mm |
| | dragend metselwerk | Ø=120mm |
| | dragend metselwerk | Ø=100mm |
| | riet dragend metselwerk | Ø=100mm (volgens tekening) |
- K
Kolom 100.100.10

Kelder



Begane grond